



HP Indigo press 5500

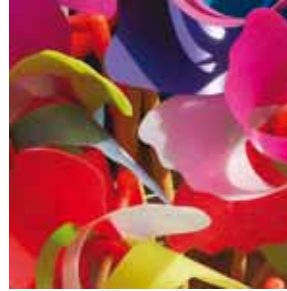
The productive digital solution with
offset look and feel as well as true photo quality





Digital printing drives new business opportunities

As digital printing becomes mainstream, commercial printers are looking for a productive, offset quality printing solution that is capable of capturing new high-value and profitable applications, as well as traditional offset applications. New growth opportunities, such as on-demand marketing collateral, 1:1 direct mail, photo specialty and mixed color books and manuals, are well within your reach too, with the HP Indigo press 5500.



HP Indigo press 5500—your profitable and productive printing solution

The HP Indigo press 5500 delivers unmatched quality, reaches higher levels of productivity, and achieves higher profitability—the keys to success in the digital world.

Capable of printing over 1.5 million color pages or more than five million monochrome pages per month, the HP Indigo press 5500 is a truly universal production device. It's also the one true digital offset press that combines the look and feel of traditional offset with genuine photo quality.

Unmatched print quality

Only the HP Indigo press 5500 offers both offset and photographic quality. Offset output has never looked so professional, with features like:

- Superior HP ElectroInk liquid ink technology
- Wide color gamut, with up to 7-color printing
- Robust color management with HP Professional PANTONE® emulation and ICC profiles
- Special and spot color capabilities, including new photo inks—light cyan and light magenta, digital matte and brand colors
- High definition dot placement technology enables 1200 dpi and zero dot gain for superior line work and micro text printing
- New photo color tables
- Best-in-class color accuracy and consistency

Maximum productivity: making every minute count

The HP Indigo press 5500 offers exciting features that help you earn more productivity out of your busy workday:

- Supports 68 ppm full color, 136 ppm in 2-color and 272 ppm monochrome in one press, regardless of media type or thickness
- Continuous printing with multi drawers and stackers,

seamless switching between jobs, proofs and media types

- Adjustment-free, minimum-touch paper handling
- Fast and efficient printing operations allow a single operator to run two machines simultaneously
- On-the-fly ink replacement for CMYK, special colors and spot color for uninterrupted production
- JDF-ready for integration into end-to-end automated workflows

Print profitably: boosting your bottom line

The HP Indigo press 5500 is a complete solution designed to help you grow margin by offering:

- Extensive automation, which reduces operator involvement
- Support of a wide range of coated and uncoated substrates including specialty media
- On-press fast ink replacement system, which eliminates ink replacement downtime when changing colors on-press
- Multiple Digital Front End (DFE) options, which offer workflow flexibility and scalable processing power
- Oil recycling system, which reduces oil consumption and waste

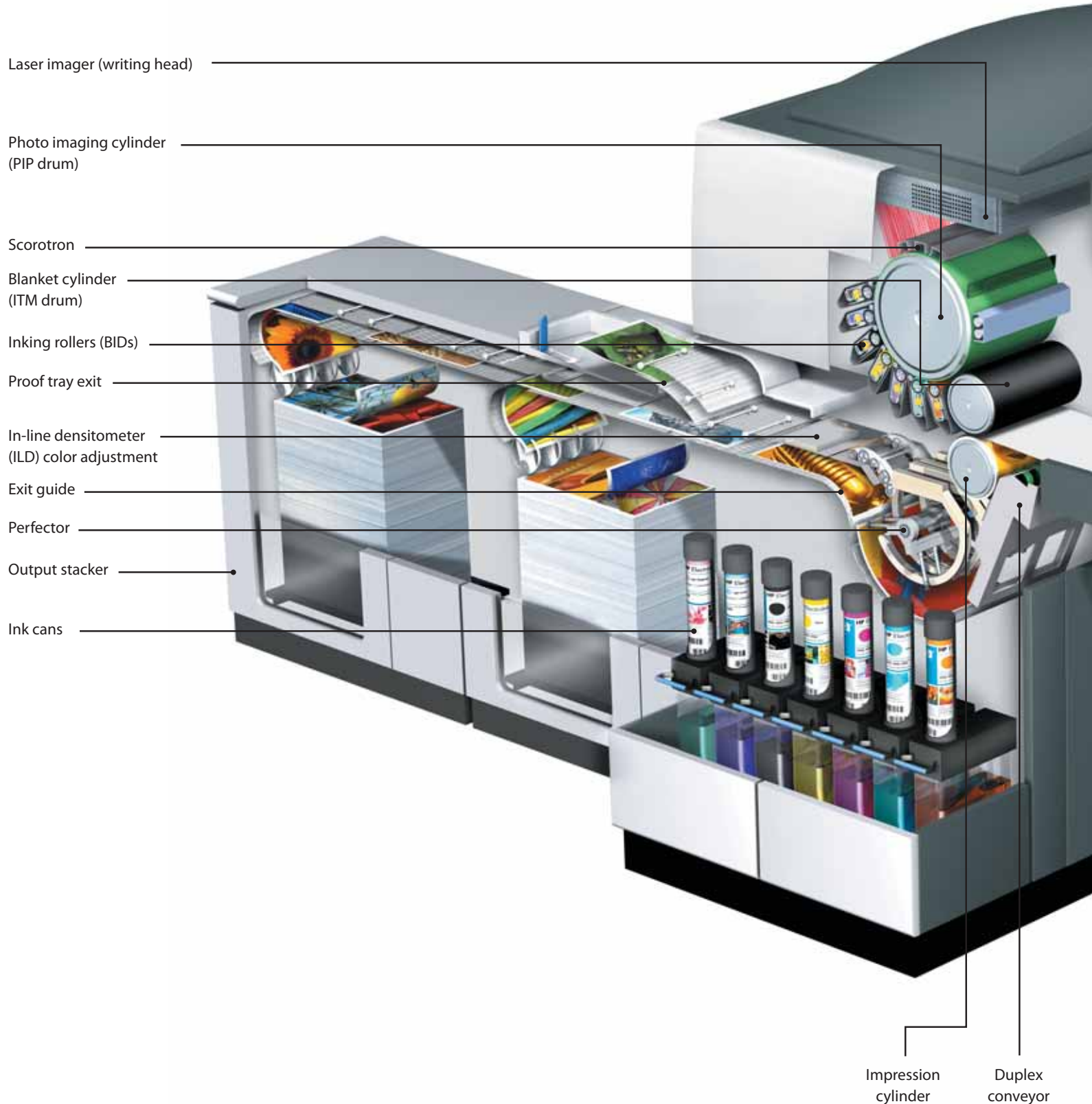
Picture new business with photo specialty services

HP Indigo's new light photo colors provide smoother skin tones, tone transition and greater color saturation. Seamlessly integrated with any existing customer workflow, these inks enhance the quality of personalized photo specialty products such as photo albums, photo calendars, post cards and greeting cards. Take image quality even higher with HP Indigo Image Enhancement Server—an optional stand-alone application product that brings your customers' digital photos to vivid life.

HP Indigo press 5500

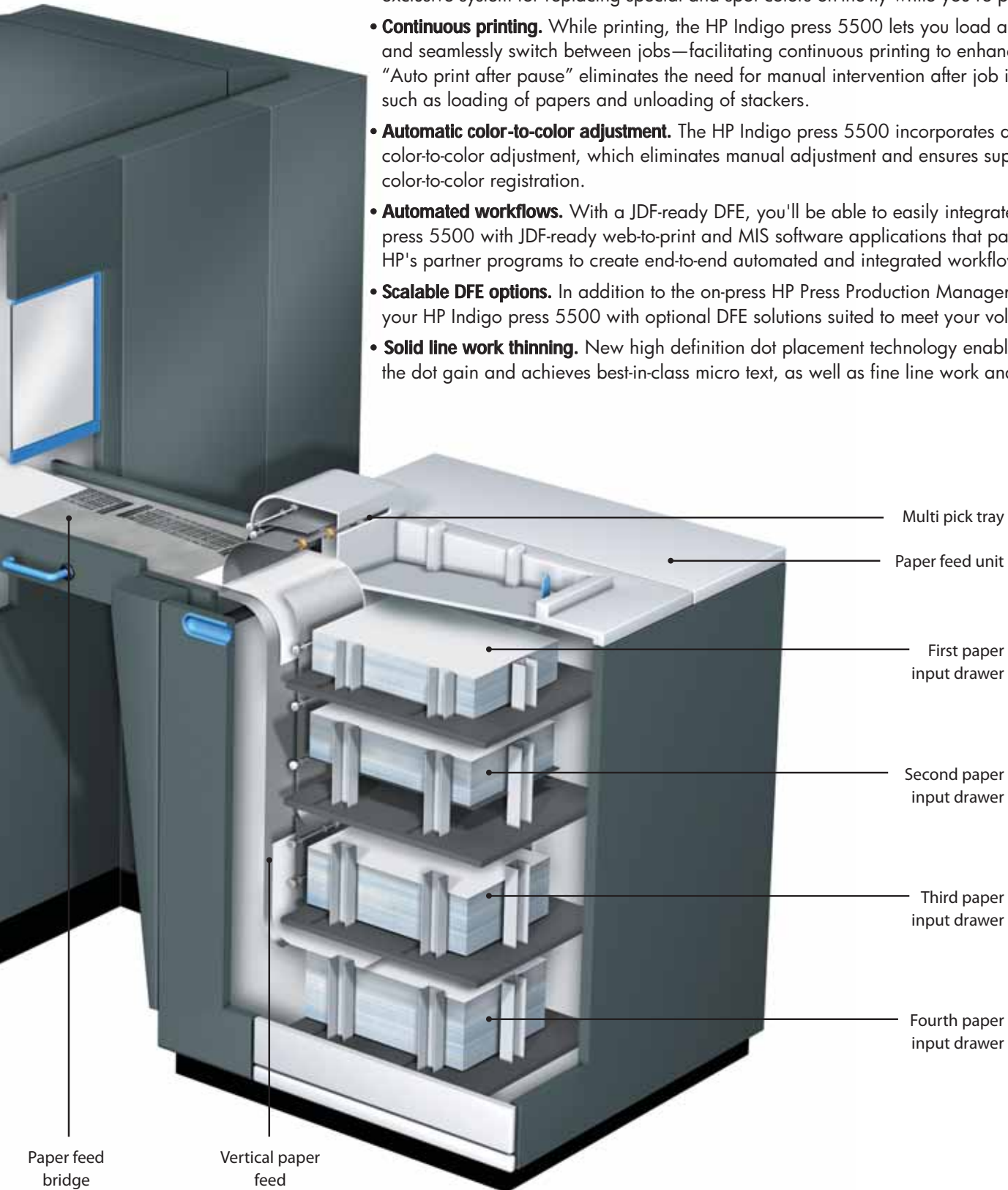
An inside look

The HP Indigo press 5500 offers a wide range of productivity features—emphasizing faster press printing operations and less operator involvement—to help you cut production time, meet tight deadlines, and stay ahead of the competition.



HP Indigo press 5500: Key features at a glance

- **4-drawer paper feeding increases productivity.** The HP Indigo press 5500 incorporates a new paper feeding unit with a 4-drawer configuration, accommodating the entire media range at full speed.
- **Support of a wide range of coated and uncoated substrates:** Process parameters are now optimized to specific substrate characteristics, extending the press spec to include top branded standard offset uncoated papers.
- **On-press fast ink replacement system.** Eliminate ink replacement downtime with HP Indigo's exclusive system for replacing special and spot colors on-the-fly while you're printing other jobs.
- **Continuous printing.** While printing, the HP Indigo press 5500 lets you load and unload, proof and seamlessly switch between jobs—facilitating continuous printing to enhance productivity. "Auto print after pause" eliminates the need for manual intervention after job interruptions, such as loading of papers and unloading of stackers.
- **Automatic color-to-color adjustment.** The HP Indigo press 5500 incorporates automatic color-to-color adjustment, which eliminates manual adjustment and ensures superb color-to-color registration.
- **Automated workflows.** With a JDF-ready DFE, you'll be able to easily integrate the HP Indigo press 5500 with JDF-ready web-to-print and MIS software applications that participate in HP's partner programs to create end-to-end automated and integrated workflows.
- **Scalable DFE options.** In addition to the on-press HP Press Production Manager, you can tailor your HP Indigo press 5500 with optional DFE solutions suited to meet your volume and workflow.
- **Solid line work thinning.** New high definition dot placement technology enables the control of the dot gain and achieves best-in-class micro text, as well as fine line work and barcode printing.





HP Indigo's end-to-end solution assures a smooth workflow

The HP Indigo press 5500 is part of a comprehensive solution that integrates third party partner software with advanced press software, the latest HP Indigo printing technology, substrates and finishing methods. HP Indigo's end-to-end solutions create a smooth process that makes your job easier and helps streamline the important task of meeting your customers' needs.

Third party partnerships complete the picture

HP Indigo has forged solid partnerships in the digital printing industry with the most innovative providers of hardware and software solutions— for photo specialty services, e-commerce, workflow, applications, substrates and finishing. Optimized to support the HP Indigo press 5500, these end-to-end solutions cover every mission-critical stage in the production chain.

Full support and service give you peace of mind

HP's principles for "Total Customer Experience" focus on the most important areas of customer satisfaction: issue prevention; fast response time; rapid, accurate issue resolution; efficient installation and superior customer care.

Set-up and maintenance services include site preparation, workflow set-up, remote diagnostics, expert training for operations and maintenance, on-site field service, fast parts delivery, as well as hotline help desks.

Process variable data more efficiently

The HP Indigo Production Manager (optional off-press DFE) accommodates the rapid growth of digital and conventional processes combined into single, unified production environments by effectively streamlining hybrid production workflows. It connects to Agfa :ApogeeX via the :ApogeeX Integration pack for HP

Indigo digital presses and to Heidelberg Prinect via the Prinect Digital PrintManager to HP Indigo digital presses.

Attractive financing options

HP provides you with important business tools, such as:

- Affordable packages for the HP Indigo press 5500, as well as software and installation services
- Flexible terms of 36, 48 or 60-month contracts

HP—a worldwide leader and trusted partner

The HP Indigo community

The global HP Indigo digital press community is linked via "My HP Indigo"—a secure online portal for vital tools, training and development materials for shop owners, press operators, sales representatives, and production managers.

www.hp.com/go/myhpindigoweb

The Digital Solutions Cooperative

An exclusive opportunity for HP Indigo owners and sponsored by HP, this user-driven network of HP Indigo press owners, HP industry experts and partner companies share ideas and knowledge to drive success. www.dscoop.org

HP Indigo Capture program

HP is committed to helping you capture business success. Grow your business with HP's innovative business development tools, training and programs.

www.hp.com/go/capture

HP Indigo is committed to providing you with top-value capabilities and results in return for your investment in the HP Indigo press 5500. Call today to find out how HP Indigo can help you grow your business.

Technical specifications

HP Indigo press 5500

Print engine specifications:

| | |
|---------------------------------------|--|
| Printing speed | 4,000 4-color 8.5" x 11" images per hour (two-up); 8,000 2-color 8.5" x 11" images per hour (two-up); 16,000 full monochrome 8.5" x 11" images per hour |
| Image quality | Resolution: 800, 1200 dpi at 8 bit , 2400 x 2400 dpi in High Definition Imaging |
| Line screens | 144, 160, 175, 180, 230 lpi |
| Paper format | 13" x 19" |
| Image format | 12.48" x 17.7" |
| Paper weight | Coated: 55 lb. text – 130 lb. cover; thickness: 3-16 points Uncoated: 40 lb. text – 120 lb. cover; thickness: 3-16 points |
| Printing technology | HP ElectroInk technology |
| HP Indigo inks | |
| Standard 4-color printing | Cyan, Magenta, Yellow and Black |
| Photo 6-color printing | Cyan, Magenta, Yellow, Black, Light Cyan and Light Magenta |
| HP IndiChrome 6-color printing | Cyan, Magenta, Yellow, Black, Orange and Violet |
| PANTONE colors | <ul style="list-style-type: none">• PANTONE-licensed HP IndiChrome on-press 6-color printing using CMYK as well as orange and violet• PANTONE-licensed HP IndiChrome off-press Ink Mixing System, for spot color creation, using CMYK as well as orange, violet, red, green, blue, bright yellow and transparent• HP Professional PANTONE Emulation Technology (PANTONE-licensed CMYK values for 4-color PANTONE simulation, utilizing ICC profiles to provide optimized simulation values for the specific press and media combination) |
| HP Indigo special effect inks | HP Indigo digital matte ink |
| Paper input system | Four drawers: Three drawers with 7" depth each (1,800 sheets of 80 lb. text each) Special jobs drawer: 1 x 2.5" (700 sheets of 80 lb. text) A total of 6100 sheets of 80lb. text All paper drawers support full range of substrates |
| Paper output system | Autoduplex/Autoperfecting standard Main stacking tray with 23.6" stack height, with job offset stacking (6,000 sheets of 80 lb. text) Proof tray with 2.36" stack height (600 sheets of 80 lb. text) |
| Dimensions of print engine | Height: 81.7"; Width: 155.5"; Depth: 89.8" |
| Press weight | 5,809 lbs. |

Digital Front End specifications:

| | |
|--|---|
| Architecture | HP Press Production Manager with integrated Global Graphics Harlequin® on-press RIP with optional expansion capability for additional RIPs that provide scalable RIP power |
| Software platform | Microsoft Windows XP professional |
| Hardware platform | 2.8 GHz Pentium 4 processor, 17" flat screen monitor, DVD-RW/CD-RW, 160 GB system HD 1GB base memory, Image memory disks - two 160 GB drives which provide 320 GB of image memory |
| Supported formats and standards | Postscript Level 1,2,3, PDF 1.6, PDF/X-1a:2001, PDF/X-1a:2003, PDF/X-3:2002, PDF/X-3:2003, TIFF 6.0, JPEG, EPS, PPML 2.1, JLYT |

Optional equipment/configurations

| | |
|---|---|
| Expanded color capabilities | 5 th , 6 th and 7 th color printing; HP Indigo Ink Mixing System |
| HP RIP Expansion Rack | Add up to four additional Harlequin® RIPs for use in parallel processing of all job types |
| Digital Front Ends | HP Indigo Production Manager; HP Indigo Scalable RIP Solution; HP Indigo Production Stream Server, Powered by Creo |
| Additional stacking units | Up to three additional stacking modules, each with capacity of 6,000 sheets of 80 lb. text. Multiple stackers allow true continuous printing (unloading while printing) |
| HP Indigo Yours Truly Designer | Full-color personalization application; 90 day trial version available |
| HP Indigo Photo Enhancement Server | Fast, automated image sharpening, smoothing, contrast improvement and shadow enhancement |



North America

Hewlett-Packard Company
1001 Summit Blvd.
P.O. Box 401
Atlanta, GA 30319
USA
Tel: +1 800 289 5986
Fax: +1 404 648 2054

Latin America

Hewlett-Packard Company
5200 Blue Lagoon Drive
Suite 950
Miami, FL 33126
USA
Tel: +305 267 4220
Fax: +305 265 5550
informahpindigo@hp.com

Europe, Middle East and Africa

Hewlett-Packard Company
Renier Nafzgerstraat 100
6221 KL Maastricht
The Netherlands
Tel: +31 43 356 5656
Fax: +31 43 356 5600

Israel

Hewlett-Packard Company
Kiryat Weizmann
P.O. Box 150
Rehovot 76101
Israel
Tel: +972 8 938 1818
Fax: +972 8 938 1338

Asia Pacific

Hewlett-Packard Company
138 Depot Road
Singapore 109683
Tel: +65 6727 0777
Fax: +65 6276 3160

www.hp.com/go/graphic-arts

© 2007 Hewlett-Packard Development Company, L.P. The information contained herein is subject to change without notice. The only warranties for HP products and services are set forth in the express warranty statements accompanying such products and services. Nothing herein should be construed as constituting an additional warranty. HP shall not be liable for technical or editorial errors or omissions contained herein.

4AA1-0917ENUS, 08/2007

Digitally printed on an HP Indigo press 5500. Printed in Israel.

PANTONE® and other PANTONE, Inc. trademarks are the property of PANTONE, Inc.

